

New Smyrna Beach Area Sports eBook

#LoveNSB | VISITNSBFL.COM





Dear Sports Enthusiast,

Thank you for considering the New Smyrna Beach area as your destination for your training and sporting event needs. Located on the central east coast of Florida, you will find this destination offers a diverse selection of fields, parks, trails, waterways, and accommodations for your team.

With an average temperature of 71 degrees, 17 miles of ocean beaches, and anchored on each end by two amazing parks — Smyrna Dunes Park/Ponce de Leon Inlet to the north, and to the south, Canaveral National Seashore, the area is one of the best kept secrets in Florida. Your team will find a globally-inspired independent foodie scene, plus two historic downtown areas: Flagler Avenue and Canal Street, which make up part of our 6-mile waterfront loop.

The area is renowned for speed and space. With Daytona International Speedway to the north, home to NASCAR races and known as the “World Center of Racing” and the only sports stadium in North America, the area also has the New Smyrna Speedway, home to the NASCAR Whelen All-American Series and the annual World Series of Asphalt Stock Car Racing and testing site for NASCAR Sprint Cup, Nationwide, and Camping World Truck Series.

To the south is Kennedy Space Center, where space exploration is taking off with SpaceX, Blue Origins, and Space Florida. In between all this, our area also offers parks, sport complexes, intracoastal waterways for rowing, kayaking, SUP, and of course, the Atlantic Ocean for surfing. The New Smyrna Beach area has eight golf courses and year-round fishing tournaments as well.

Let us help you plan your event in the area and be sure to plan a pre or post trip to enjoy the 17 miles of white sand beaches, over 6,000 room nights, condos and private homes or campground rentals.

Visit our website at **VISITNSBFL.COM** or download our mobile app on the iTunes and Google Play store; just search “New Smyrna Beach.” You can also find us on Facebook, Twitter or Instagram. We look forward to working with you and hosting you in our amazing area.

Sincerely,

Debbie Meihls, CDME

Executive Director

New Smyrna Beach Area Visitors Bureau

Table of Contents

SPORTS

Aquatics	4
Baseball	4
Basketball	5
Football/Pop Warner	5
Golf	6
Lacrosse	7
Soccer	7
Softball	8
Tennis	9
Track & Field/Cross Country ...	9
Triathlons/Marathons	9

WATER SPORTS

Diving	12
Paddleboarding	12
Surfing	12
Paddling Trails	13

SPORTS FACILITIES

Edgewater	19
New Smyrna Beach	24
Oak Hill	31
Osteen	33
Port Orange	35
Facility Asset Matrix	43
Facility Quality Matrix	44
Facility Use Matrix	45

QUICK GUIDE

Area Entertainment	47
City & County Parks	48
Eats	49
Fitness Centers	49
Health/Nutrition	49
Medical, Rehab & Therapy	50
Shopping	52
Sports & Recreation Facilities ..	52
Spectator Sports	53
Sports Stores & Equipment	53
Weather	54
Area Map	56



AQUATICS



Aqua Park Swim Club

600 Eaton Road
Edgewater, FL 32132

Contact:

aquaparkswimclub@gmail.com
386.957.1778

Aqua Park is a volunteer-run community swimming pool in Edgewater, Florida. For the past three years it has been run and managed by a group of parents of New Smyrna Beach High School swimmers with the assistance of various local businesses and members of the community.

Facilities include:

- Heated indoor pool
- 6 lanes
- Pool size: 25 X 25 (meters)
- Competition-ready

Port Orange Family YMCA

4701 City Center Parkway
Port Orange, FL 32129

The Y is, and always will be, dedicated to building healthy, confident, connected and secure children, adults, families and communities. The Y's impact is felt every day, when an individual makes a healthy choice, when a mentor inspires a child and when a community comes together for the common good.

Facilities include:

- Olympic size pool (heated)
- Locker rooms for adults & youth
- 10 lanes
- Pool size: 25 X 50 (meters)
- Competition-ready

BASEBALL



Fields

Coraci Sports Complex

5200 Coraci Boulevard
Port Orange, FL 32128

Contact:

Sue Lovallo, Director of Parks and Recreation,
386.506.5851

This complex is the home to some of the Port Orange adult softball and soccer leagues. Baseball and soccer tournaments as well Pop Warner football are held here. The city is seeking to expand Coraci by adding an official multipurpose field that can be used for soccer, flag football, and lacrosse.

Facilities include:

- 50-acre complex
- 4 lighted baseball/softball fields (325 ft. fence, portable fences)
- 2 restrooms
- Concessions/kitchenette

Hawks Park

1108 S. Ridgewood Avenue
Edgewater, FL 32132

Contact:

Samantha Bergeron, Director of Parks and Recreation,
386.424.2400, ext. 7205

The complex also includes a conservation area, handicap-accessible nature trail outdoor, amphitheater and playground equipment. Recreation programs include youth baseball and softball, and youth soccer.

Facilities include:

- 4 lighted baseball fields
- 2 restrooms
- Concessions with full kitchen

New Smyrna Beach Sports Complex

1800 Turnbull Bay Road
New Smyrna Beach,
FL 32168

Contact:

David Ray, Sports Complex Manager, 386.424.2271

The New Smyrna Beach Sports Complex provides the local residents with a vibrant epicenter of community athletic activities designed to provide a family-oriented environment and encourage the participation in athletics to enhance the quality of life in New Smyrna Beach. Many sporting events are held here — from high school football, Pop Warner football, lacrosse, and soccer tournaments to baseball and softball tournaments.

Facilities include:

- 68-acre community athletic complex
- 5 restrooms
- 3 concessions with full kitchens/kitchenettes
- Football stadium with interior paved track and dual grand stands for home and visiting team
- Baseball stadium with 90 ft. bases, 60 ft. 6 in. pitching mound, and 315 ft. home run fences
- 3 lighted youth baseball fields with 60, 65, and 70 ft. bases, 46 and 50 ft. pitching mounds, and 195 and 200 ft. home run fences

- 1 lighted youth baseball field with 90 ft. bases, 60 ft. 6 in. pitching mound, and 275 ft. home run fences
- 3 lighted softball fields with 60 & 65 ft. bases, pitching rubber at any distance, and 300 ft. home run fences
- Fregolle Miracle League Field for special needs youth baseball

Port Orange City Center Sport Complex

4625 City Center Drive
Port Orange, FL 32129

Contact:

Sue Lovallo, Director of Parks and Recreation,
386.506.5851

The sports complex is a part of the City Center Municipal Complex. It hosts baseball, softball and soccer games for the city of Port Orange. Also included in the City Center Municipal Complex are a skate park, gymnasium, fitness trail, YMCA, and a half-mile walking trail around the city's lake. Electronic scoreboards and lighted fields are available.

Facilities include:

- 5 softball fields (lighted, portable fencing)
- 5 baseball fields (lighted)
- 4 batting cages
- 1 restroom
- Concessions/full kitchen

BASKETBALL



Port Orange Gymnasium

4655 City Center Drive
Port Orange, FL 32129
386.506.5851

This three-acre site is part of Port Orange's City Center Municipal Complex. It's home to the city's youth basketball program and houses the Parks and Recreation staff. Visitors and residents are welcome to pick up games and practice in the open gym. Other fitness programs such as Zumba, Tai Chi and gymnastics are also available.

Facilities include:

- Three indoor basketball courts
- Restrooms

Port Orange YMCA

4701 City Center Parkway
Port Orange, FL 32129
386.760.9622

The Y is a powerful association of men, women and children from all walks of life joined together by a shared passion: to strengthen the foundations of community. With a focus on youth development, healthy living and social responsibility, the Y nurtures the potential of every youth and teen, improves the nation's health and well-being and provides opportunities to give back and support neighbors.

Facilities include:

- Indoor basketball courts
- Locker rooms with showers
- Steam room and sauna

Southeast Volusia YMCA

148 Turgot Avenue
Edgewater, FL 32132
386.428.9737

The Y is a powerful association of men, women and children from all walks of life joined together by a shared passion: to strengthen the foundations of community. With a focus on youth development, healthy living and social responsibility, the Y nurtures the potential of every youth and teen, improves the nation's health and well-being and provides opportunities to give back and support neighbors.

Facilities include:

- Indoor gymnasium
- Locker rooms with showers
- Kitchenette

FOOTBALL/POP WARNER



Fields

Coraci Sports Complex

5200 Coraci Boulevard
Port Orange, FL 32128

Contact:

Sue Lovallo, Director of Parks and Recreation,
386.506.5851

This complex is home to some of the Port Orange adult softball and soccer leagues. Baseball and soccer tournaments as well Pop Warner football is held here. The city is seeking to expand Coraci by adding an official multipurpose field that can be used for soccer, flag football, and lacrosse.

New Smyrna Beach Sports Complex

1800 Turnbull Bay Road
New Smyrna Beach,
FL 32168

Contact:

David Ray, Sports Complex
Manager, 386.424.2271

The New Smyrna Beach Sports Complex provides the local residents with a vibrant epicenter of community athletic activities designed to provide a family-oriented environment and encourage the participation in athletics to enhance the quality of life in New Smyrna Beach. Many sporting events are held here — from high school football to Pop Warner football

Spruce Creek High school

801 Taylor Road
Port Orange, FL 32127
386.756.7200
sprucecreekhigh.com

GOLF



Courses

Crane Lakes Golf Course

1790 Crane Lakes Blvd.
Port Orange, FL 32128
386.767.4653

This is an 18-hole par 66, semi-private 5,025 yard course with full service practice facility. Club and cart rental available.

Cypress Head Golf Club

6231 Palm Vista Street
Port Orange, FL 32128
386.756.5449

This 18-hole par 72 course designed by Arthur Hills & Mike Dasher was renovated in 2016. This course has been nominated by "Golf Digest" as one of the top 100 municipal golf courses in the United States. There is a lighted driving range, pro shop and restaurant.

Cypress Point Golf Course

650 Osteen Maytown Road
Osteen, FL 32764
407-323-0760

This 9-hole executive course provides an enjoyable experience for the casual golfer. Features a Par 33 course, with short par 4s & 3 par 3s.

No tee times accepted, but all are welcome to play.

Hidden Lakes Golf Club

35 Fairgreen Avenue
New Smyrna Beach,
FL 32168
386.427.4138

This 18-hole par 69, 5,050-yard course has a variety of long and short holes. There is a snack bar, driving range, and pro shop.

New Smyrna Golf Club

1000 Wayne Avenue
New Smyrna Beach,
FL 32168
386.424.2192

This 18 Hole Par 72, Donald-Ross designed 6,200-yard course features wide fairways and water in play. A fully stocked pro shop, driving range, restaurant, cart rental and clubs available.

The Preserve at Turnbull Bay

2600 Turnbull Estates Drive
New Smyrna Beach,
FL 32168
386.427.8727

The Preserve provides a fantastic assortment of 18 holes par 72 that wind through the Spruce Creek Preserve. It has a challenging layout surrounded by large hammock oaks, pines, palms and beautiful lakes with water coming into play on 17 holes.

Spruce Creek Country Club

1900 Country Club Drive
Port Orange, FL 32128
386.756.6114

Spruce Creek Country Club and Golf Course, famed

for its location within the Spruce Creek Fly-In Community (Fly in and Play 18), is the largest and most lush fly-in community in the country. Spruce Creek Golf Course is open for public play on a daily basis. Enjoy all the amenities of country club life while you play the course recommend by Golf Digest as one of the Best 5 courses in the Daytona Beach golf area. Located a short driving distance from the Beaches of Daytona, Ormond, Ponce Inlet, and New Smyrna hotel districts. Spruce Creek can accommodate players of all levels.

Venetian Bay Town & Country Club

63 North Airport Road
New Smyrna Beach,
FL 32168
386.424.5775

This 18-hole par 72, 6,918-yard championship course offers all the amenities. While there, enjoy a state-of-the-art clubhouse with a full restaurant. The pro shop has all the latest golf apparel and equipment. Wide fairways and smooth rolling greens that work their way through the Florida landscape with a generous practice putting green, a chipping green including a practice bunker and a beautiful driving range boasting multiple target greens.

LACROSSE



Fields

Coraci Sports Complex

5200 Coraci Boulevard
Port Orange, FL 32128

Contact:

Sue Lovallo, Director of
Parks and Recreation,
386.506.5851

This complex is the home to some of the Port Orange adult softball and soccer leagues. Baseball and soccer tournaments as well as Pop Warner football games are held here. The city is seeking to expand Coraci by adding an official multipurpose field that can be used for soccer, flag football, and lacrosse.

Facilities include:

- 50-acre complex
- To add multipurpose fields
- 2 restrooms
- Concessions/kitchenette

New Smyrna Beach Sports Complex

1800 Turnbull Bay Road
New Smyrna Beach,
FL 32168

Contact:

David Ray, Sports Complex
Manager, 386.424.2271

The New Smyrna Beach Sports Complex provides the local residents with a vibrant epicenter of community athletic activities designed to provide a family-oriented environment and encourage the participation in athletics

to enhance the quality of life in New Smyrna Beach. Many sporting events are held here — like lacrosse, high school football, Pop Warner football and soccer, baseball, and softball tournaments.

Facilities include:

- 5 multipurpose fields (lighted)

SOCCER



Fields

Coraci Sports Complex

5200 Coraci Boulevard
Port Orange, FL 32128

Contact:

Sue Lovallo, Director of
Parks and Recreation,
386.506.5851

This complex is home to some of the Port Orange adult softball and soccer leagues. Baseball and soccer tournaments as well as Pop Warner football are held here. The city is seeking to expand Coraci by adding an official multipurpose field that can be used for soccer, flag football, and lacrosse

Facilities include:

- 50-acre complex
- 2 soccer fields
- 1 multipurpose field that can be used as 2 soccer fields
- 2 restrooms
- Concessions/kitchenette

Hawks Park

1108 S. Ridgewood Avenue
Edgewater, FL 32132

Contact:

Samantha Bergeron, Director
of Parks and Recreation,
386.424.2400, ext. 7205

The complex also includes a conservation area, handicap-accessible nature trail outdoor, amphitheater and playground equipment. Recreation programs include youth baseball, softball and soccer.

Facilities include:

- 19,000 sq. ft. recreation complex
- 3 lighted soccer fields
- 2 restrooms
- Concessions with full kitchen

New Smyrna Beach Sports Complex

1800 Turnbull Bay Road
New Smyrna Beach,
FL 32168

Contact:

David Ray, Sports Complex
Manager, 386.424.2271

The New Smyrna Beach Sports Complex provides the local residents with a vibrant epicenter of community athletic activities designed to provide a family-oriented environment and encourage the participation in athletics to enhance the quality of life in New Smyrna Beach. Many sporting events are held here — such as lacrosse, high school football, Pop Warner football, and soccer, baseball, and softball tournaments.

Facilities include:

- 68-acre community athletic complex

- 5 soccer fields or multipurpose fields with lights
- 5 restrooms
- 3 concessions with full kitchens/kitchenettes

Port Orange City Center Sport Complex

4625 City Center Drive
Port Orange, FL 32129

Contact:

Sue Lovallo, Director of
Parks and Recreation,
386.506.5851

The sports complex is a part of the City Center Municipal Complex. It hosts baseball, softball and soccer games for the city of Port Orange. Also included in the City Center Municipal Complex are a skate park, gymnasium, fitness trail, YMCA, and a half-mile walking trail around the city's lake. Electronic scoreboards and lighted fields are available.

Facilities include:

- 2 soccer/football fields
- 1 restroom
- Concessions/full kitchen

SOFTBALL



Fields

Coraci Sports Complex

5200 Coraci Boulevard
Port Orange, FL 32128

Contact:

Sue Lovallo, Director of
Parks and Recreation,
386.506.5851

This complex is the home to

some of the Port Orange adult softball and soccer leagues. Baseball and soccer tournaments as well Pop Warner football are held here. The city is seeking to expand Coraci by adding an official multipurpose field that can be used for soccer, flag football, and lacrosse.

Facilities include:

- 50-acre complex
- 4 lighted baseball/softball fields (300 ft. fence, portable fences)
- 2 restrooms
- Concessions/kitchenette

New Smyrna Beach Sports Complex

1800 Turnbull Bay Road
New Smyrna Beach,
FL 32168

Contact:

David Ray, Sports Complex
Manager, 386.424.2271

The New Smyrna Beach Sports Complex provides the local residents with a vibrant epicenter of community athletic activities designed to provide a family-oriented environment and encourage the participation in athletics to enhance the quality of life in New Smyrna Beach. Many sporting events are held here — such as lacrosse, high school football, Pop Warner football, and soccer, baseball, and softball tournaments.

Facilities include:

- 68-acre community athletic complex
- 3 softball fields (all with lights)
- 4 scoreboards
- 4 restrooms
- 3 concessions with full kitchens/kitchenettes

Port Orange City Center Sport Complex

4625 City Center Drive
Port Orange, FL 32129

Contact:

Sue Lovallo, Director of
Parks and Recreation,
386.506.5851

The sports complex is a part of the City Center Municipal Complex. It hosts baseball, softball and soccer games for the city of Port Orange. Also included in the City Center Municipal Complex are a skate park, gymnasium, fitness trail, YMCA, and a half-mile walking trail around the city's lake. Electronic scoreboards and lighted fields are available.

Facilities include:

- 5 softball fields (lighted, portable fencing)
- 4 batting cages
- 1 restroom
- Concessions/full kitchen

TENNIS



Courts

Airport Road Park

6751 Airport Road
Port Orange, FL 32138
386.506.5851
port-orange.org

Facilities include:

- 8 lighted courts

The Racquet Tennis Center

2640 Paige Avenue
New Smyrna Beach,

FL 32168
386.424.0717
racquettenniscenter.com

Please note, membership is required. Guest fee is \$10.

Facilities include:

- 6 clay courts
- 1 hard court
- 4 courts are lighted for night play

Spruce Creek Recreational Facility

5959 S. Spruce Creek Road
Port Orange, FL 32129
386.506.5851
port-orange.org

Facilities include:

- 6 lighted courts

TRACK & FIELD/ CROSS COUNTRY



New Smyrna Beach Sports Complex

1800 Turnbull Bay Road
New Smyrna Beach,
FL 32168

Contact:

David Ray, Sports Complex
Manager, 386.424.2271

The New Smyrna Beach Sports Complex provides the local residents with a vibrant epicenter of community athletic activities designed to provide a family-oriented environment and encourage the participation in athletics

to enhance the quality of life in New Smyrna Beach. Many sporting events are held here — such as lacrosse, high school football, Pop Warner football, and soccer, baseball, and softball tournaments.

Facilities include:

- 68-acre community athletic complex
- 8-lane track
- Municipal stadium
- 5 restrooms
- 3 concessions with full kitchens/kitchenettes

TRIATHLONS/ MARATHONS



Daytona Beach ½ Marathon

1 Daytona Boulevard
Daytona Beach, FL 32114

Daytona International Speedway was built with more than concrete and steel. It was built with vision, determination and, most of all, it was built with imagination. Become part of one of the most unique running/walking experiences in the world. See what has inspired millions of fans from all over the globe to climb into its grandstands and witness some of the greatest moments in motorsports history. You have the unique opportunity to actually run on the speedway! The race starts on the speedway near pit row, does a lap before heading east toward the Atlantic Ocean where you will run a small distance on the hard-packed sand and then head back to

finish on the Speedway.

Your journey along the course will be unique as well. There will be race-themed course marshals, pit crew aid stations, enthusiastic volunteers and race-themed photo ops along the way. This is one of the most unique courses in the running world. The iconic course starts and finishes at the World Center of Racing, taking runners from the historic flat asphalt surface of Daytona International Speedway's racing apron, onto the main thoroughfare, to a panoramic view of the Atlantic Ocean from high atop the International Speedway Bridge.

Race distance: 13 miles

*A variety of 5K races take place throughout the year in the New Smyrna Beach/Port Orange area.

Life's a Beach Triathlon

*Flagler Avenue
New Smyrna Beach, FL*

Triathlons should not be intimidating! The Life's a Beach Triathlon is an athletic event that is both fun and accessible and shows people that it can be totally awesome to get outside in a great environment, spend fun times with friends and family and get a little exercise. Make the Life's a Beach Triathlon a part of the fabric of your community's summer. With each full-price entry, Life's a Beach will donate \$1 to your local Sea Turtle Watch/Walk program or a local beach preservation non-profit.

Swim distance: 200 yards

Bike distance: 5 miles on a variety of surfaces

Run distance: 2 miles

Lighthouse Loop Half Marathon

*Dunlawton Bridge
Port Orange, FL*

There is no better way to spend a crisp, cool, autumn morning than running and there won't be a more beautiful run than through the streets along the eastern coastline of Volusia County. There is no better venue than the Lighthouse Loop Half Marathon & 5K. Both routes begin in Port Orange, just near the base of the Dunlawton bridge. The half marathon route will take you south until you loop around the scenic Ponce de Leon Inlet lighthouse.

Event distance: 13.1 miles

Shark Bite Half Marathon

*201 Buenos Aires Street
New Smyrna Beach,
FL 32169
352.215.3134*

This is a Certified Road Race, not a beach run. Shark Bite Half Marathon & 5K. The race starts and finishes at the beautiful Flagler Ave Boardwalk where you can view a stunning sunrise before exploring the rest of the route. The course offers the best that NSB has to offer with breathtaking views throughout. Crossing both causeways (bridges) giving wonderful views of the Intracoastal Waterway and ocean, and then meandering

through both of NSB's historic downtown districts: Flagler Avenue and Canal Street.

Distance: 13.12 miles

Swim distance: 200 yards

Fat-Tire Bike Beach Ride: 5 miles

Beach run: 2 miles

YMCA Corporate Cup Challengen

*4009 Halifax Drive
Port Orange, FL 32127*

This triathlon puts your physical endurance and mental strength to the test. Through swimming, biking and running, this event is great for beginners and the most passionate fitness enthusiasts of any age.

Swim distance: 500 yards

Bike distance: 12 miles

Run distance: 4 miles



WATER SPORTS



Diving

Off the coast of Volusia County there are 15 sites of artificial reefs. The reefs start near Ormond Beach and go all the way to off the coast of Flagler Avenue. There are also dive shops to help you with any diving gear or licensing you may need.



Paddleboarding

Home to the Indian River Lagoon, the most biologically diverse estuary in North America and the vast Atlantic Ocean, New Smyrna Beach is the perfect place to get on board... on paddleboard, that is. Stand-up paddleboarding, or SUP, is an active way to explore local waterways. It also gives an added dimension to fishing and birding. Plus, it's the best way to spot dolphins and manatees up close.



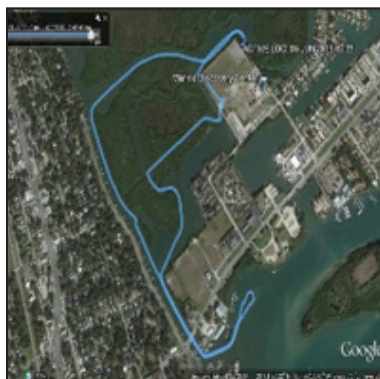
Surfing

New Smyrna Beach is also well known to surfers, offering some of the finest wave action on the Eastern seaboard. In the early 1930s, Daytona Beach was named "Florida's first surf city," but with the advent of World War II, surfing in Florida came to a halt. Shortly after the war, the arrival of foam and fiberglass surfboards, the post-war euphoria in America, and changing demographics, surfing captured the imagination of America like never before. By the early 1970s New Smyrna Beach was Florida's surfing underground, with dozens of extraordinary surfers sharing what little light the surf industry and media would shine their way. New Smyrna Beach has played a large role in the development of amateur and pro surfing in Florida since the mid-1960s. Amateur competition in New Smyrna began in 1966 at Flagler Avenue, but it was the Coronado Surf Club that created the first locally organized contest in 1967. In 1979, former Coronado Surf Club members reinvented the club as the Smyrna Surfari Club, a nonprofit organization that mixes surf and community service interests. The oldest extant surf club in the state, the Surfari Club remains vital by putting purpose into practice, providing scholarship support for local youth through events and competitions, mentoring the development of its own, and positioning New Smyrna Beach as a player in the state's surf hierarchy.

PADDLING TRAILS

You can paddle around these mangrove islands and see many species of birds, including blue herons, snowy egrets, brown and white pelicans, rosette spoonbills and osprey, just to name a few. You may also spot sea turtles, dolphins and manatees, along with various species of crabs and rays.

Bird Rookery Paddle



The beginning portion of the paddle takes you through the Salt Marsh Restoration Project — a Florida Fish and Wildlife Commission project. You also will paddle along a seawall built by the Turnbull Settlement in 1766-76 and take in a view of homes along Riverside Drive. The route passes under the North Causeway and through the New Smyrna Beach City Marina. Watch for big boats because you will be at the edge of the Intracoastal Waterway. The rookeries are two mangrove islands where water birds choose to nest year-round. You may see birds on the nest during mating season — February-June. Pelicans inhabit the area the rest of the year.

Directions: This route often is used by the Marine Discovery Center for its beginning paddler tours.

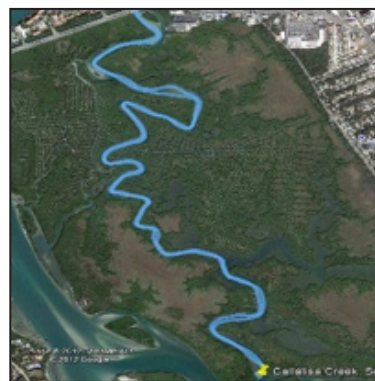
Brown's Bay Trail (approximately 2.6 miles)



Paddle across the Intracoastal Waterway to Firecracker Island, and note the large sandbar at low tide. Be careful as you paddle off of the sandbar and across the deep-water channel. This channel is the only course that power boats can use. This is not a slow zone for power boats. Stay to the right so you can safely enter Brown's Bay. You will see some of the markers for this trail — an Eagle Scout project for a local young man a few years ago. As you enter back into the river, take precautions as you cross the deep-water channel and ICW back to Menard-May Park.

Directions: Launch at the beach area of Menard-May Park.

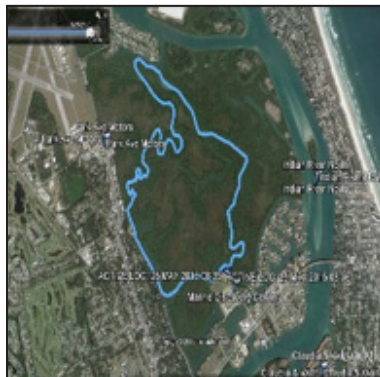
Callalisa Creek Paddle



Due to length of paddle, this trail is not recommended for novices. There is very little powerboat boat traffic and no strong current. Callalisa Creek is a great paddle on low or high tides. This is a tidal creek on the north end of the Mosquito Lagoon that includes mosquito drainage ditches built in the 1960s. You often will see a lot of coastal birds on this quiet, pleasant paddle through mangrove forest. Because the creek is shallow, dolphin or manatee sightings are unlikely.

Directions: Launch into the creek from Callalisa Park on the northwest corner of the intersection of S. Peninsula and Third avenues. When paddling south, the rule of thumb is to go to the right at any turn areas. When paddling north, turn left at turn areas. This will take you to the main river where it's easy to find your way out if you get lost.

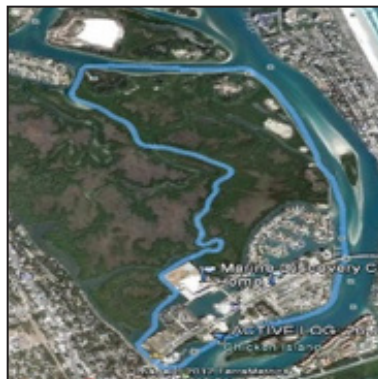
Hunter Creek Paddle



If you're looking to only paddle in the backwaters, this route is for you. As you paddle through the mangrove forest, the quiet, peaceful setting is perfect for spotting great blue, little blue and tri-color heron along with snowy and great egrets. At low tide, a lot of sand bars emerge for an opportunity to explore the marine life including conch, fish eggs, stingrays, and more. This route has very little powerboat traffic except a few boats at high tide. Paddling is great on low tide but watch out for sandbars.

Directions: Launch behind the Marine Discovery Center, 520 Barracuda Drive. Paddle to the left and continue around the property line. Paddle west into a large creek on the right. At the end, make a right turn.

Indian River to Smyrna Creek Paddle



Before launching, check the wind and tide direction to determine if you want to start your tour in the river or on the backwaters. Either way, you will see a nice mix of birds in the backwater and dolphin (and manatee during warmer months) in the main river. In Smyrna Creek, there is very little powerboat traffic except possibility at high tide. However, please be cautious of boat traffic when you get into the river.

Directions: This paddle begins at the public floating docks at 162 North Causeway. Paddle east around to go under the North Causeway Bridge. Continue up the river beside the mangrove forest.

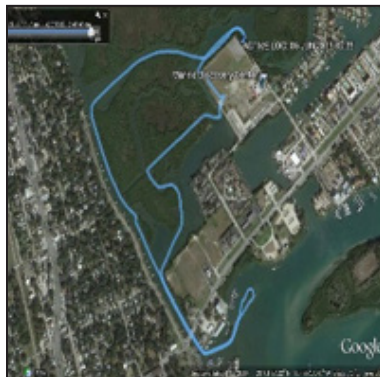
Indian River South Tour Paddle



Along the way, you may see a historic marker for the old wharf that was part of the New Smyrna Settlement. After passing under the South Causeway Bridge, look for a monument on the west shore at low tide. You also may see remnants of the coquina stone wharf that was the center of the settlement and later was destroyed during the Civil War. From the North Causeway launch area, paddle south along the shoreline to the Gabordy Canal. It is south of Yacht Club Island and can be found in a grassy area between docks. On the return trip, consider crossing to the east side of the Indian River. Watch for the sandbars. Paddle toward Chicken Island, which is directly across from the launch area.

Directions: This paddle begins at the public floating docks at 162 North Causeway.

Mosquito Lagoon Paddling Trail



The Mosquito Lagoon Paddling Trail is a good marked trail for first-time paddlers. It's a great way to view life in the mangrove wetland and estuarine habitats including birds, manatees and dolphins. The trail was laid out by a local Boy Scout as his Eagle Scout project a few years ago. He named it the Mosquito Lagoon Paddling Trail and included markers along the way.

Directions: Enter the trail from the Indian River Preserve Park at the end of Sandpiper Drive, which is off Saxon Boulevard on the beachside. Since the walk between the parking lot and launch area is longer than most, using a cart is suggested. Closed-toe water shoes also are strongly suggested since oyster beds are plentiful.

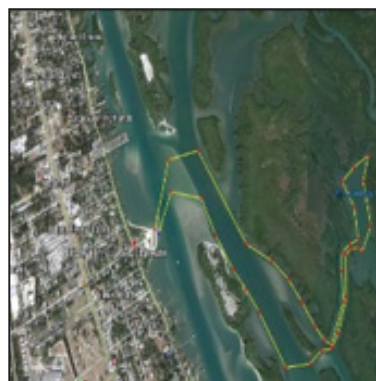
North Trail (approximately 2.6 miles)



Cross the ICW and Firecracker Island, and note the large sand bar at low tide. As you exit the sandbar and cross the narrow deep water channel, be careful of power boats. This is not a no-wake zone. Once you cross, stay on the left next to the island. Power boats do travel through this area. Most are moving quickly so be sure to stay close to the island.

Directions: Launch from the beach at Menard-May Park.

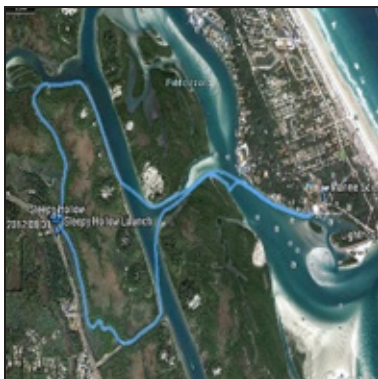
Pine Island Bay Trail (approximately 3 miles)



Paddle across the ICW to Firecracker Island, and note the large sandbar at low tide. Turn right and stay right as you paddle next to the island. Paddle across the deep-water channel mindful of powerboats to the trail on the left. When you turn around and exit trail, be careful of power boats and stay close to the island until you cross the channel and ICW as your return back to Menard-May Park.

Directions: Launch from the beach at Menard-May Park.

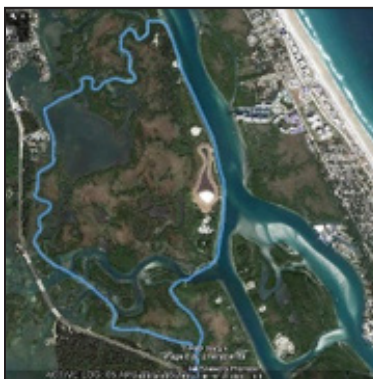
Sleepy Hollow to Lighthouse Paddle



This paddle begins at the Sleepy Hollow launch area at the intersection of U.S. 1 and Sleepy Hollow Drive. The route is recommended for advanced paddlers because of inlet currents near the lighthouse. The route crosses the Ponce de Leon Cut and the Intracoastal Waterway. The beginning portion of the paddle takes you through backwater stretches where you may see heron, egrets, dolphin, stingrays and other wildlife. When you reach the Ponce de Leon Inlet Lighthouse, you will find public restrooms, a lighthouse gift shop, restaurants, and the Marine Science Center.

Directions: From the launch, go left and then right into the mangrove forest. This takes you to the entrance of Spruce Creek and the Intracoastal Waterway. Paddle right, then right again. Head south and cross over to the “cut.” Then make a left. Follow the short distance to the Halifax River. When safe, cross the river and follow the shoreline to the lighthouse and nearby launch area.

Sleepy Hollow to Rose Bay Paddle



This paddle begins at the Sleepy Hollow launch area at the intersection of U.S. 1 and Sleepy Hollow Drive. A nice, relaxing paddle, you will traverse salt marshes and Spartina (cord) grass and may see a lot of heron and egrets. When you reach the channel, you may see dolphin. During the warmer months, manatee also may be near the channel. This route is recommended for advanced paddlers because of distance. On the return trip, paddlers are in the main part of Halifax River with power boat traffic. Avoid the channel and stay close to the islands until you reach the wetlands at the end of the tour.

Directions: From the launch, paddle north toward the three bridges at Spruce Creek. Follow U.S. 1 along the east side, paddling north. After the third bridge, cut into a small creek and follow the salt marsh toward Rose Bay. When you enter the bay, go east to see the entrance to Twelve Mile Creek. Paddle along the winding creek to the Halifax River.

South Trail

(approximately 2.5 miles)

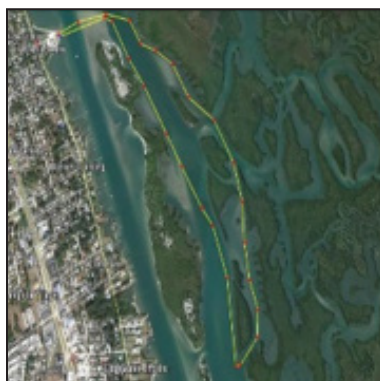


Paddle across the ICW, and note the large sandbar at low tide. Keep to your right as you paddle alongside the island. Power boats, fishermen, personal watercrafts are plentiful and moving quickly as this is not a no-wake zone. As you enter the narrow channel and cross the ICW watch for power boats and stay to one side so you can be seen and out of harm’s way. Turn north and paddle outside of the main channel of the ICW for safety.

Directions: Launch from the beach at Menard-May Park.

Southeast Trail

(approximately 2.85 miles)



Paddle across the ICW and Firecracker Island, and note the large sandbar at low tide. Turn right and stay to the right as you paddle south just past the cut on the right, and paddle left around the mangrove island on the east side of the channel. Be mindful of the power boats, the deep water channels are not in a no-wake zone.

Directions: Launch from the beach at Menard-May Park.

Spruce Creek State Canoe Trail

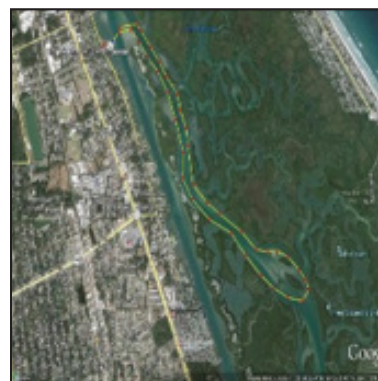


Offering a 16-mile round-trip starting at Spruce Creek Park and the Strickland Bay Bridge. Travel from a large water body and salt marshes to a tree-lined creek upstream. The journey is varied and interesting, giving paddlers view of wildlife, several natural communities and prehistoric sites, including a major earthen mound. Degree of difficulty is easy and skill level beginner.

Directions: Spruce Creek Park (I-95 Exit 256, east one mile); Strickland Bay bridge (US 1, 5 miles north of New Smyrna Beach); Cracker Creek (Taylor Road, Port Orange)

Three Sisters Trail

(approximately 5 miles)



Paddle across the Intracoastal Waterway (ICW) to Firecracker Island, and note there is a large sandbar at low tide. Paddle around the sandbar and stay to the right beside the island. Three Sisters is a cluster of three sandy islands at low tide with some mangroves on each one. On your way back, stay to one side or the other of the channel, as this area is also a main thoroughfare for local boaters, fishermen and water sports enthusiasts.

Directions: Launch from the beach area of Menard-May Park, in Edgewater.

New Smyrna Beach Area Sports Facilities

EDGEWATER

Aqua Park Swim Club
Hawks Park Recreation Complex
Southeast Volusia Family YMCA
Whistle Stop Park

NEW SMYRNA BEACH

Alonzo “Babe” James Center
Brannon Riverview Center
Coronado/Mainland Shuffleboard
Doris Leeper Disc Golf Course
NSB City Gym
NSB Sports Complex

OAK HILL

Mary DeWees Park

OSTEEN

Beck Ranch Park

PORT ORANGE

City Center Municipal Complex
City Center Sports Complex
Coraci Sports Complex
Southwinds Soccer Complex
Spruce Creek Recreational Facility
Port Orange YMCA
Willow Run Park



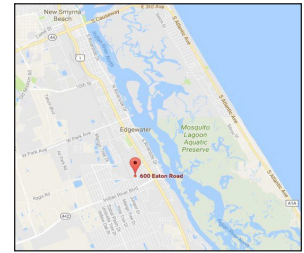
EDGEWATER

Aqua Park Swim Club

600 Eaton Road
Edgewater, FL 32132

Contact Information
aquaparkswimclub@gmail.com
386.957.1778

Operated By
- Aqua Park Swim Club Parents
- New Smyrna Beach High School



SIGNIFICANT FEATURES

- Non-heated pool
- Indoor therapy pool

TOURNAMENT/ EVENT SUPPORT AMENITIES

Spectator Seating:
Benches/chairs
Capacity: 150

Parking Capacity:
20

Restrooms:
2

Concessions:
Prepackaged

Fencing:
Perimeter fencing

COMPETITION POOL AMENITIES

Pool Size:
25 X 50 (meters)

Lanes:
6

Competition-Ready:
Yes

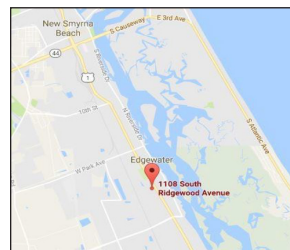


Hawks Park Recreation Complex

1108 S. Ridgewood Avenue
Edgewater, FL 32132

Contact Information
Samantha Bergeron, Director of
Parks & Recreation 386.424.2400 ext. 7205

Operated By
City of Edgewater



SIGNIFICANT FEATURES

- 19,000 sq. ft. complex
- 4 lighted baseball fields
- 3 lighted soccer fields
- 108 parking spaces

TOURNAMENT/ EVENT SUPPORT AMENITIES

Spectator Seating:
Permanent bleachers
Benches/chairs
Grass/lawn seating
Capacity: 350

Parking Capacity:
108

Restrooms:
2

Concessions:
Full kitchen
Prepackaged
Points of sale

Fencing:
Perimeter fencing

SPORTS TOURISM INVENTORY

Baseball/Softball Fields:
4

Soccer fields:
3

BASEBALL FIELD AMENITIES

Field Type:
Grass

Field Distance:
200

Player Seating:
Dugouts

Shade Structures:
No

Scoreboards:
4

Lighted Fields:
4

Warm-Up Areas:
Yes

Portable Basepaths:
No

Infield Type:
Grass

LONG FIELD AMENITIES

Field Type:
Grass

Number of Goals:
8

Player Seating:
Benches

Shade Structures:
No

Scoreboards:
No

Lighted Fields:
3



Southeast Volusia Family YMCA

148 W. Turgot Avenue
Edgewater, FL 32132

Operated By
Teresa Rand, President/CEO
386.409.9622 • jcory@vfymca.org



SIGNIFICANT FEATURES

- Indoor basketball gymnasium
- Locker rooms with showers

TOURNAMENT/ EVENT SUPPORT AMENITIES

Spectator Seating:
Temporary bleachers
Benches/chairs

Parking Capacity:
60

Restrooms:
2

Concessions:
Kitchenette
Prepackaged
Points of sale

SPORTS TOURISM INVENTORY

Indoor basketball courts:
1

Swimming pools:
1

Indoor volleyball courts:
1

INDOOR COURT AMENITIES

Court Surface:
Rubber

Court Dimensions:
84' X 50'

Player Seating:
Chairs

Court Lining Lined for:
Volleyball

Scoreboards:
1

Number of Baskets:
6

Basket Type:
Fixed

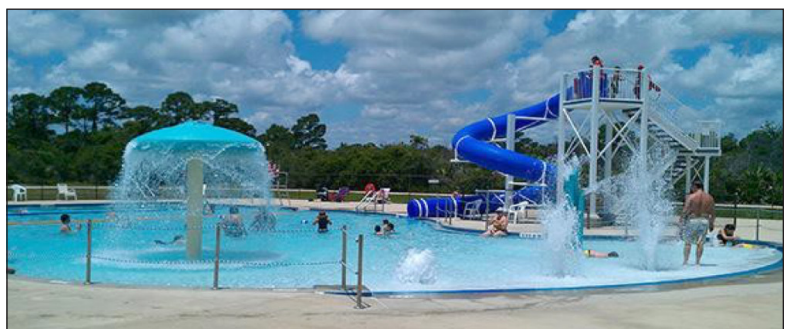
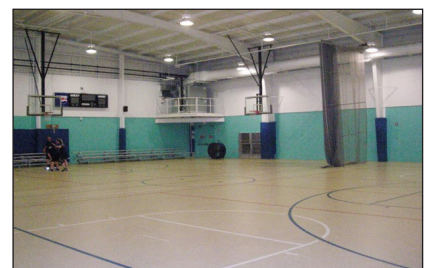
Curtains:
1

POOL AMENITIES

Pool Size:
N/A

Lanes:
N/A

Competition-Ready:
N/A

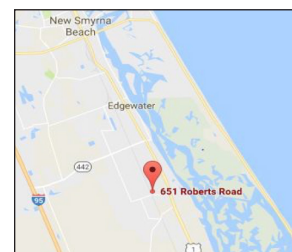


Whistle Stop Park

651 Roberts Road
Edgewater, FL 32141

Contact Information
Samantha Bergeron, Director of
Parks & Recreation 386.424.2400 ext. 7205

Operated By
City of Edgewater



SIGNIFICANT FEATURES

- 1 softball field (lighted)
- 4 tennis courts (lighted)
- 4 racquetball courts (lighted)
- 1 outdoor basketball court
- 2 pickleball courts
- 91 parking spaces
- 2 pavilions

TOURNAMENT/ EVENT SUPPORT AMENITIES

Spectator Seating:
Temporary bleachers
Benches/chairs
Grass/lawn seating
Capacity: 300

Parking Capacity:
91

Restrooms:
1

Concessions:
Kitchenette

SPORTS TOURISM INVENTORY

Baseball/Softball Fields:
1

Outdoor Basketball Courts:
1

Pickleball Courts:
2

Skate Park:
1

Tennis Courts:
4

3-wall Racquetball Courts:
4

BASEBALL FIELD AMENITIES

Field Type:
Grass

Field Distance:
300

Player Seating:
Dugouts

Shade Structures:
No

Scoreboards:
1

Lighted Fields:
1

Warm-Up Areas:
Yes

Portable Basepaths:
No

Infield Type:
Clay

ADDITIONAL AMENITIES

Tennis Courts:
4 concrete courts

Outdoor Basketball:
1 court

Pickleball:
2 outdoor courts





NEW SMYRNA BEACH

Alonzo “Babe” James Center

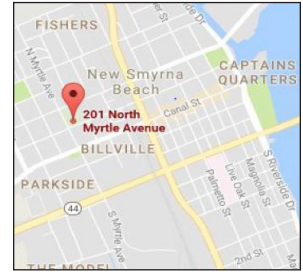
201 N. Myrtle Avenue
New Smyrna Beach, FL 32168

Contact Information

Nancy Maddox
NSB's Leisure Services Director
386.424.2175

Operated By

City of New Smyrna Beach
Boys and Girls Clubs of Volusia-Flagler Counties
NSB Police Athletic League



SIGNIFICANT FEATURES

- 1 indoor basketball court
- 60 parking spaces

TOURNAMENT/ EVENT SUPPORT AMENITIES

Spectator Seating:
Permanent bleachers
Benches/chairs
Capacity: 200
Parking Capacity:
60
Restrooms:
2
Concessions:
Full kitchen
Prepackaged
Points of sale

INDOOR COURT AMENITIES

Court Surface:
Hardwood
Court Dimensions:
84' X 50'
Player Seating:
Benches
Court Lining Lined For:
Volleyball
Scoreboards:
1
Number of Baskets:
2
Basket Type:
Retractable
Curtains:
NA

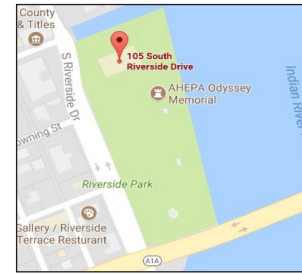


Brannon Center

105 S. Riverside Drive
New Smyrna Beach, FL 32168

Contact Information

Shonna Green, Brannon Center Manager
sgreen@cityofnsb.com
386.410.2885



SIGNIFICANT FEATURES

- 13,900 sq. ft.
- Seating up to 500
- 7,500 sq. ft. outdoor private terrace
- State-of-the-art equipment
- Ample parking

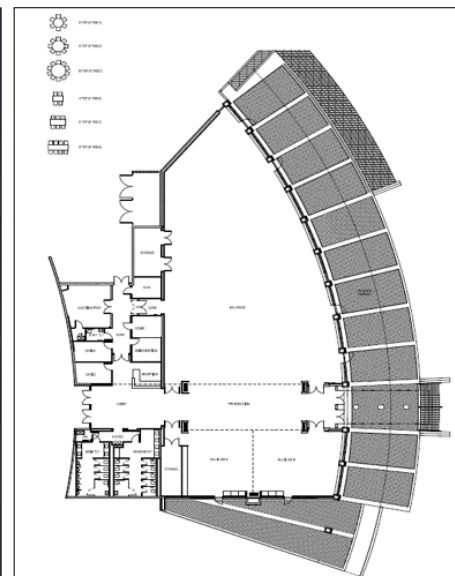
TOURNAMENT/ EVENT SUPPORT AMENITIES

Spectator Seating:
Capacity: 500

Restrooms:
2

Concessions:
Kitchenette
Points of sale

Audio/Visual Tech:
Capable



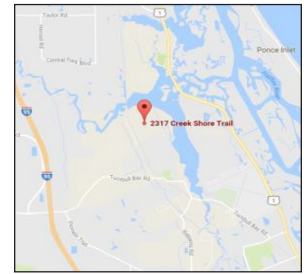
Doris Leeper Spruce Creek Preserve

2317 Creek Shore Trail
New Smyrna Beach, FL 32168

Contact Information

Gene Varano
386.200.4242
skylinediscgolf9@gmail.com

Operated By
Volusia County



SIGNIFICANT FEATURES

- Trails:
hiking, biking, horseback
- Canoe launch
- Boardwalk
- Parking

DISC GOLF AMENITIES

Course Type:
Permanent

Holes:
18

Target Type:
DISCatcher®

Tee Type:
Grass/concrete

Elevation:
Flat

Foliage:
Heavy



New Smyrna Beach City Gym

1000 Live Oak Street
New Smyrna Beach, FL 32168

Contact Information
Nancy Maddox
NSB Leisure Services Director
386.410.2890

Operated By
City of New Smyrna Beach



SIGNIFICANT FEATURES

- Gymnasium
- 2 outdoor basketball courts
- Long field
- Parking

TOURNAMENT/ EVENT SUPPORT AMENITIES

Spectator Seating:
Permanent bleachers
Benches/chairs
Capacity: 200

Parking Capacity:
60

Restrooms:
1

Concessions:
Points of sale

INDOOR COURT AMENITIES

Court Surface:
Hardwood

Court Dimensions:
84' X 50'

Player Seating:
Benches

Court Lining Lined for:
Volleyball/pickleball

Scoreboards:
1

Number of Baskets:
2

Basket Type:
Fixed

Curtains:
N/A



New Smyrna Beach Sports Complex

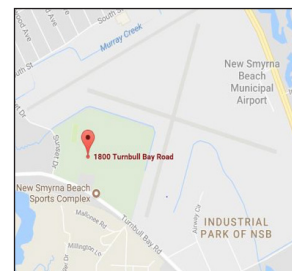
1800 Turnbull Bay Road
New Smyrna Beach, FL 32168

Contact Information

David Ray
Sport Complex Manager
386.424.2271

Operated By

City of New Smyrna Beach



SIGNIFICANT FEATURES

- 4 youth baseball fields (lighted)
- 3 softball fields (lighted)
- 1 high school baseball field
- 1 municipal football stadium
- 5 multipurpose fields (lighted)
- 8-lane track

TOURNAMENT / EVENT SUPPORT AMENITIES

Spectator Seating:
Stadium seating
Permanent bleachers
Benches/chairs
Grass/lawn seating
Capacity: 2100

Parking Capacity:
300

Restrooms:
5

Concessions:
Full kitchen
Kitchenette
Grill/grease
Prepackaged
Points of sale

Audio/Visual Tech:
Capable

Fencing:
Perimeter fencing

SPORTS TOURISM INVENTORY

Baseball/Softball Fields
7

Track & Field:
1

Football Ffields:
1

Soccer Fields:
5

YOUTH BASEBALL FIELD AMENITIES

Field Type:
Grass/Clay

Field Distance:
200-400

Player Seating:
Dugout

Shade Structures:
No

Scoreboards:
5

Lighted Fields:
5

Warm-Up Areas:
Mounds/tunnels

Portable Basepaths:
No

Infield Type:
Grass/clay

SOFTBALL FIELD AMENITIES

Field Type:
Grass

Field Distance:
300

Player Seating:
Dugout

Shade Structures:
No

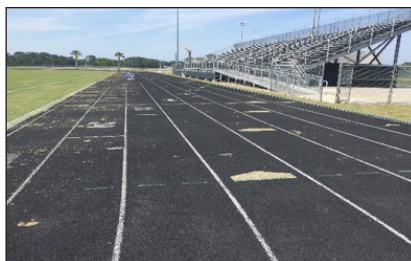
Scoreboards:
3

Lighted Fields:
3

Warm-Up Areas:
Mounds

Portable Basepaths:
Yes

Infield Type:
Clay



The background of the page is a solid orange color. Overlaid on this background is a repeating pattern of small, stylized gold icons representing various sports and recreational activities. These icons include figures running, jumping, swimming, playing tennis, golfing, skiing, snowboarding, fishing, and playing basketball, among others. The icons are scattered across the entire page, creating a textured, active feel.

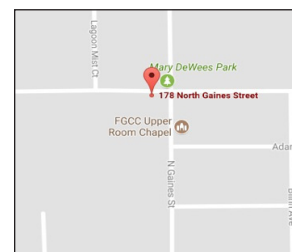
OAK HILL

Mary DeWees Park

178 N. Gaines Street
Oak Hill, FL 32759

Contact Information
Oak Hill City Administrator
Kohn Evans • 386.345.3522

Operated By
Volusia County



SIGNIFICANT FEATURES

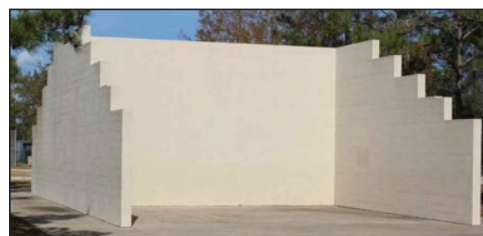
- 1 little league baseball field
- 1 tennis court
- 2 racquetball courts
- 1 shuffleboard court
- 1 outdoor basketball court
- 5-acre park
- 60 parking spaces
- Community center
- Picnic pavilions

TOURNAMENT/ EVENT SUPPORT AMENITIES

Spectator Seating:
Temporary bleachers
Grass/lawn seating
Capacity: 200

Parking Capacity:
60

Restrooms:
2





OSTEEN

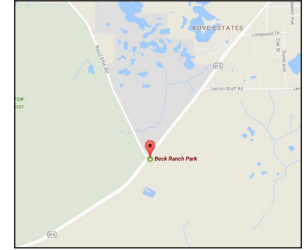
Beck Ranch Park

751 S. State Road 415
Osteen, FL 32764

Contact Information

Tim Baylie, Director
tbaylie@volusia.org • 386.736.5953

Operated By
Volusia County



SIGNIFICANT FEATURES

- 2 multipurpose fields (soccer/football)
- 2 volleyball courts
- 2.5-acre park
- 65 parking spaces
- Picnic pavilions

TOURNAMENT/ EVENT SUPPORT AMENITIES

Parking Capacity:
65

Restrooms:
2





PORT ORANGE

City Center Municipal Complex

1000 City Center Circle
Port Orange, FL 32129

Contact Information

Susan Lovallo
Port Orange Parks & Recreation Director
386.506.5852 • slovallo@port-orange.com

Operated By

City of Port Orange
Parks & Recreation



SIGNIFICANT FEATURES

- Gymnasium
- Skate park
- 1/2-mile walking trail
- Performing arts center
- Fitness trail
- 70 parking spaces

TOURNAMENT/ EVENT SUPPORT AMENITIES

Spectator Seating:
Permanent bleachers
Capacity: 300

Parking Capacity:
70

Restrooms:
2

Concessions:
Prepackaged
Points of sale

SPORTS TOURISM INVENTORY

Indoor Basketball Courts:
2

Indoor Volleyball Courts:
2

INDOOR COURT AMENITIES

Court Surface:
Rubber/parquet

Court Dimensions:
85' x 50'

Player Seating:
300

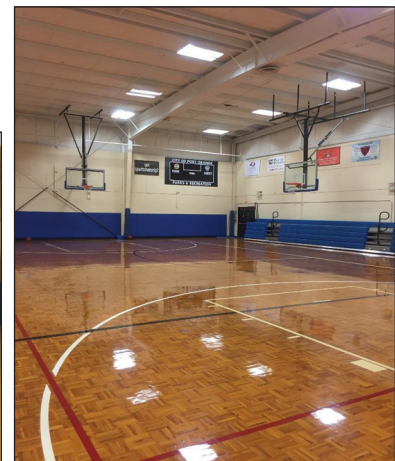
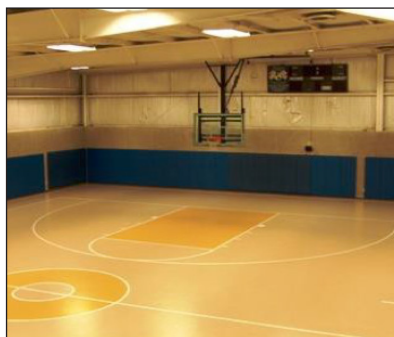
Court Lining Lined For:
Volleyball

Scoreboards:
2

Number of Baskets:
8

Basket Type:
Fixed

Curtains:
No



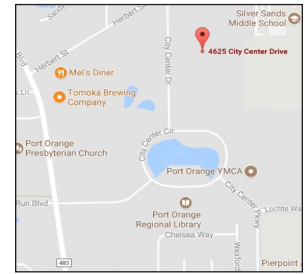
City Center Sports Complex

4625 City Center Drive
Port Orange, FL 32129

Contact Information

Susan Lovallo
Port Orange Parks & Recreation Director
386.506.5852 • slovallo@port-orange.com

Operated By
City of Port Orange
Parks & Recreation



SIGNIFICANT FEATURES

- 5 softball fields (lighted)
- 5 youth baseball fields
- 2 soccer/football fields
- 4 batting cages
- Gymnasium
- Fitness trail
- Portable fencing
- Skate park
- Concession stand
- 75 parking spaces

TOURNAMENT/ EVENT SUPPORT AMENITIES

Spectator Seating:
Stadium seating
Permanent bleachers
Benches/chairs
Grass/lawn seating
Capacity: 1000
Parking Capacity:
75
Restrooms:
1
Concessions:
Full kitchen
Kitchenette
Points of sale
Fencing:
Perimeter fencing

SPORTS TOURISM INVENTORY

Baseball/Softball Fields:
5

Soccer Fields:
2

BASEBALL/SOFTBALL FIELD AMENITIES

Field Type:
Grass

Field Distance:
200-300

Player Seating:
Dugout

Shade Structures:
Yes

Scoreboards:
5

Lighted Fields:
5

Warm-Up Areas:
Yes

Portable Basepaths:
Yes

Infield Type:
Clay

LONG FIELD AMENITIES

Field Type:
Grass

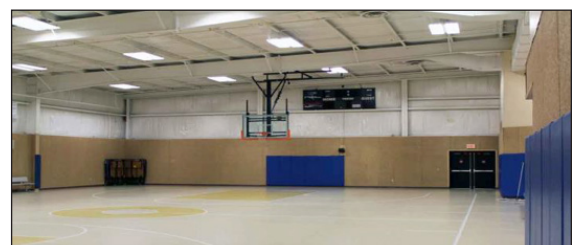
Number of Goals:
8

Player Seating:
Benches

Shade Structures:
No

Scoreboards:
No

Lighted Fields:
2



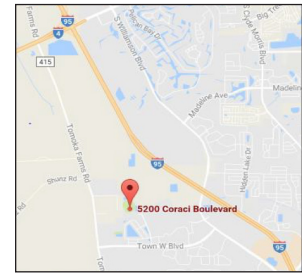
Coraci Sports Complex

5200 Coraci Boulevard
Port Orange, FL 32128

Contact Information

Susan Lovallo
Port Orange Parks & Recreation Director
386.506.5852 • slovallo@port-orange.com

Operated By
Port Orange
Parks & Recreation



SIGNIFICANT FEATURES

- 4 baseball fields (lighted)
- 1 multipurpose field
- 100 parking spaces
- Portable fencing

TOURNAMENT/ EVENT SUPPORT AMENITIES

Spectator Seating:
Stadium seating
Permanent bleachers
Benches/chairs
Grass/lawn seating
Capacity: 1500

Parking Capacity:
300

Restrooms:
2

Concessions:
Kitchenette
Prepackaged
Points of sale

Fencing:
Perimeter fencing

SPORTS TOURISM INVENTORY

Baseball/Softball Fields:
4

Football Fields:
1

Soccer Fields:
2

BASEBALL/SOFTBALL FIELD AMENITIES

Field Type:
Grass

Field Distance:
300

Player Seating:
Dugout

Shade Structures:
Yes

Scoreboards:
4

Lighted Fields:
4

Warm-Up Areas:
Mounds

Portable Basepaths:
Yes

Infield Type:
Clay

LONG FIELD AMENITIES

Field Type:
Grass

Number of Goals:
6

Player Seating:
Benches

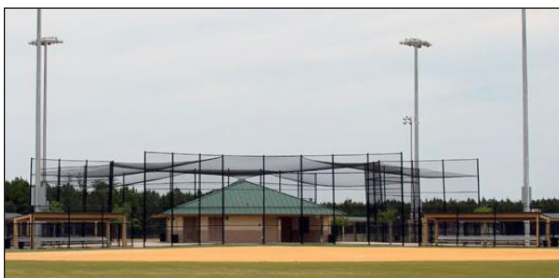
Shade Structures:
No

Scoreboards:
1

Lighted Fields:
3

ADDITIONAL AMENITIES

Portable fencing
Batting tunnels

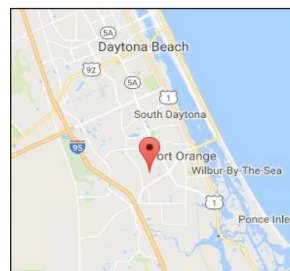


Port Orange YMCA

4701 City Center Parkway
Port Orange, FL 32129

Contact Information
dmartin@vfymca.org
386.760.9622

Operated By
Diana Martin, Executive Director
Robert Ludlow, Chief Volunteer Officer



SIGNIFICANT FEATURES

- 52,000 sq. ft. building
- Olympic size pool (heated)
- 4 indoor racquetball courts
- 1 indoor basketball court
- Gymnasium
- Locker rooms (adults)
- Locker rooms (youth)
- Training room

TOURNAMENT/ EVENT SUPPORT AMENITIES

Spectator Seating:
Temporary bleachers
Capacity: 200

Parking Capacity:
Over 200

Restrooms:
1

Concessions:
Prepackaged
Points of sale

SPORTS TOURISM INVENTORY

Indoor Basketball Courts:
1

Racquetball:
4

Swimming Pools:
1

Indoor Volleyball Courts:
2

INDOOR COURT AMENITIES

Court Surface:
Hardwood

Court Dimensions:
84' X 50'

Player Seating:
Chairs

Court Lining Lined For:
Volleyball

Scoreboards:
1

Number of Baskets:
6

Basket Type:
Retractable

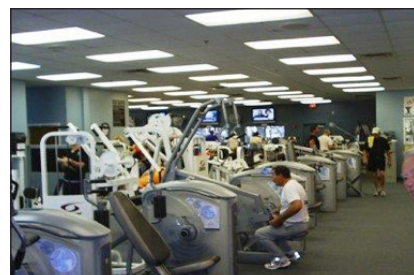
Curtains:
Yes

POOL AMENITIES

Pool Size:
25 X 50 (meters)

Lanes:
10

Competition-Ready:
Yes



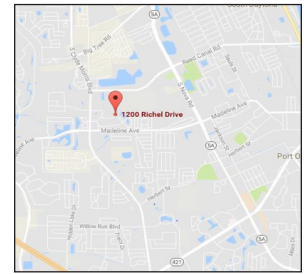
Southwinds Soccer Complex

1200 Richel Drive
Port Orange, FL 32129

Contact Information

Susan Lovallo
Port Orange Parks & Recreation Director
386.506.5852 • slovallo@port-orange.com

Operated By
Port Orange
Parks & Recreation



SIGNIFICANT FEATURES

- 2 soccer fields
- 1 concession stand
- 100 parking spaces

TOURNAMENT/ EVENT SUPPORT AMENITIES

Spectator Seating:
Grass/lawn seating
Capacity: 1000

Parking Capacity:
100

Restrooms:
1

Concessions:
Kitchenette
Points of sale
Alcohol sales

Fencing:
Perimeter fencing

LONG FIELD AMENITIES

Field Type:
Grass

Number of Goals:
8

Player Seating:
N/A

Shade Structures:
No

Scoreboards:
No

Lighted Fields:
No



Spruce Creek Recreational Facility

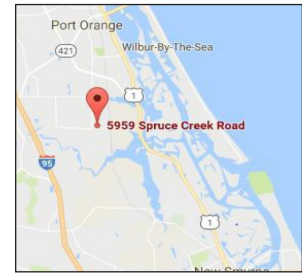
5959 S. Spruce Creek Road
Port Orange, FL 32127

Contact Information

Susan Lovallo
Port Orange Parks & Recreation Director
386.506.5852 • slovallo@port-orange.com

Operated By

Port Orange
Parks & Recreation



SIGNIFICANT FEATURES

- 2 youth size baseball fields
- 6 tennis courts (lighted)
- 1 outdoor basketball court
- 50 parking spaces

TOURNAMENT/ EVENT SUPPORT AMENITIES

Spectator Seating:
Temporary bleachers
Capacity: 120

Parking Capacity:
103

Restrooms:
1

Concessions:
Full kitchen
Grill/grease
TurboChef
Fryer
Points of sale

SPORTS TOURISM INVENTORY

Baseball/Softball Fields:
2

Outdoor Basketball Courts:
1

Tennis Courts:
6

BASEBALL/SOFTBALL FIELD AMENITIES

Field Type:
Grass

Field Distance:
300

Player Seating:
Dugout

Shade Structures:
No

Scoreboards:
2

Lighted Fields:
2

Warm-Up Areas:
Yes

Portable Basepaths:
Yes

Infield Type:
Grass/clay

TENNIS COURT AMENITIES

Court Type:
Concrete

Lighting:
Yes

Seating:
Yes

Shade Structures:
No



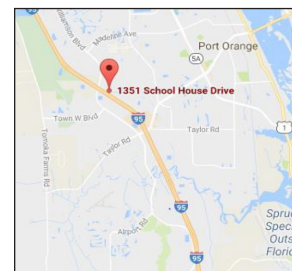
Willow Run Park

1351 Schoolhouse Drive
Port Orange, FL 32129

Contact Information

Susan Lovallo
Port Orange Parks & Recreation Director
386.506.5852 • slovallo@port-orange.com

Operated By
Port Orange
Parks & Recreation



SIGNIFICANT FEATURES

- 2 tennis courts (lighted)
- 1 baseball field
- 1 multipurpose field
- 4 multipurpose courts
- Parking

TOURNAMENT/ EVENT SUPPORT AMENITIES

Spectator Seating:
Grass/lawn seating

Parking Capacity:
Ample parking

Restrooms:
1

Concessions:
None

SPORTS TOURISM INVENTORY

Baseball/Softball Fields:
1

Soccer Fields:
1

Tennis Courts:
2

BASEBALL/SOFTBALL FIELD AMENITIES

Field Type:
Grass

Field Distance:
N/A

Player Seating:
No

Shade Structures:
No

Scoreboards:
No

Lighted Fields:
No

Warm-Up Areas:
No

Portable Basepaths:
No

Infield Type:
Grass

TENNIS COURT AMENITIES

Court Type:
Concrete

Lighting:
Yes

Seating:
No

Shade Structures:
No

LONG FIELD AMENITIES

Field Type:
Grass

Number of Goals:
2

Player Seating:
Benches

Shade Structures:
No

Scoreboards:
No

Lighted Fields:
No



Facility Asset Matrix

		BASKETBALL COURTS (FULL SIZE)	BASEBALL (FULL SIZE)	BASEBALL (YOUTH SIZE)	EVENTS CENTER	DISC GOLF	FOOTBALL FIELDS	LONG FIELDS (FULL SIZE)	LONG FIELDS (YOUTH SIZE)	POOLS (25 METERS)	POOLS (50 METERS)	SHUFFLEBOARD COURTS	SKATE PARK	SOFTBALL (FULL SIZE)	SOFTBALL (YOUTH SIZE)	TENNIS COURTS
EDGEWATER																
	Aqua Park Swim Club								1							
	Doris Leeper Disc Golf Course				1											
	Hawks Park Recreation Complex		1	3			3									
	Southeast Volusia Family YMCA	1							1							
	Whistle Stop Park											1	1		4	
NEW SMYRNA BEACH																
	Alonzo "Babe" James Center	1														
	Brannon Riverview Center			1												
	Coronado / Mainland Shuffleboard									20						
	NSB City Gym	1														
	NSB Sports Complex		2	3		1	8						3	3		
	NSB Skate Park											1				
OAK HILL																
	Mary DeWees Park			1							1					1
PORT ORANGE																
	City Center Municipal Complex	3										1				
	City Center Sports Complex		5	3			2						5	3		
	Coraci Sports Complex		4			1	2						4			
	Port Orange YMCA	2								1						
	Southwinds Soccer Complex						3									
	Spruce Creek Recreational Facility	1	1										1		6	
	Willow Run Park			1			1									2
TOTAL		9	13	11	13	11	1	19	0	2	1	21	3	14	6	13

Facility Quality Matrix

	GRADE	TOTAL SCORE	ACCESSIBILITY	CAPABILITY	CAPACITY	QUALITY	SUPPORT
EDGEWATER							
Aqua Park Swim Club	F	4	0	1	1	1	1
Hawks Park Recreation Complex	C	11	2	2	3	2	2
Southeast Volusia Family YMCA	C	9	2	2	1	2	2
Whistle Stop Park	D	5	1	1	1	1	1
NEW SMYRNA BEACH							
Alonzo "Babe" James Center	C	11	1	2	3	3	2
Brannon Riverview Center	N/A	5	2	1	0	2	2
Coronado / Mainland Shuffleboard	C	10	2	2	2	2	2
Doris Leeper Disc Golf Course	C	11	1	2	4	3	1
NSB City Gym	D	8	2	1	2	1	2
NSB Sports Complex	A-	15	2	3	5	3	2
OAK HILL							
Mary DeWees Park					1		
PORT ORANGE							
City Center Municipal Complex	C+	12	2	2	3	3	2
City Center Sports Complex	B+	15	2	3	5	3	2
Coraci Sports Complex	A-	15	2	3	5	3	2
Port Orange YMCA	C+	12	2	2	3	3	2
Southwinds Soccer Complex	C	11	2	2	3	2	2
Spruce Creek Recreational Facility	D	6	1	1	1	1	2
Willow Run Park	F	2	0	1	0	0	1

HIGHEST POSSIBLE SCORE

- ACCESSIBILITY - Ease of access from major thoroughfares
- CAPABILITY - Ability of facility to host sports tournament
- CAPACITY - Ability to host volume of teams and/or spectators for events
- QUALITY - Quality of asset as compared to regional tournament-level facilities
- SUPPORT - Proximity to hotels, restaurants, and other supporting properties

2
3
5
4
2

Facility Use Matrix

		ARCHERY	BADMINTON	BASKETBALL	BOXING	CHEERLEADING	COMPETITIVE SWIM	CROSS FIT	DANCE	DISC GOLF	DOG CHALLENGE	FENCING	FOOTBALL	GYMNASTICS	JUDO	JUMP ROPE	KARATE	KICKBALL	LACROSSE	MULTI-SPORT FESTIVAL	PICKLEBALL	QUIDDITCH	RUGBY	SHOOTING	SHUFFLEBOARD	SOCCER	SOFTBALL	TABLE TENNIS	TAEKWONDO	TEAM HANDBALL	ULTIMATE FRISBEE	VOLLEYBALL	WEIGHT LIFTING	WRESTLING	
	EDGEWATER																																		
	Aqua Park Swim Club																																		
	Hawks Park Recreation Complex																																		
	Southeast Volusia Family YMCA																																		
	Whistle Stop Park																																		
	NEW SMYRNA BEACH																																		
	Alonzo "Babe" James Center																																		
	Brannon Riverview Center																																		
	Coronado Shuffleboard																																		
	Doris Leeper Disc Golf Course																																		
	NSB City Gym																																		
	NSB Sports Complex																																		
	OAK HILL																																		
	Mary DeWees Park																																		
	PORT ORANGE																																		
	City Center Municipal Complex																																		
	City Center Sports Complex																																		
	Coraci Sports Complex																																		
	Port Orange Rec Center																																		
	Port Orange YMCA																																		
	Southwinds Soccer Complex																																		
	Spruce Creek Rec Facility																																		
	Willow Run Park																																		



QUICK GUIDE

AREA ENTERTAINMENT

Annual Calendar of Exciting Events

From Art & Gallery Walks to Wine and Craft Beer Walks, New Smyrna Beach has a variety of events that take place each month as well as many annual events: Multiple Music Festivals, Multiple Food Festivals, Mardi Gras, St Patrick's Day, Cinco De Mayo, Norwood's Wine Festival, and so many more.

Arts and Culture

The arts have a permanent home in New Smyrna Beach. The city has consistently been ranked among the finest in the book, "The 100 Best Small Art Towns in America: Where to Discover Creative Communities, Fresh Air, and Affordable Living" by John Villani. The Atlantic Center for the Arts, a world-renowned artist in residence program, is based here. Several art galleries will catch the fancy of even the most jaded devotee. A number of art festivals are held throughout the year including the prestigious *IMAGES: A Festival of the Arts*, held in mid-February. Art enthusiasts can always find a unique piece of original art to take home. Music lovers flock to New Smyrna Beach for the annual Jazz Festival held in September. Delight in New Smyrna's concerts and festivals that feature world-famous musicians. In

addition, visitors can learn to paint a masterpiece at the Bob Ross Art Gallery, the only one in the chain of galleries that offers a certificate to those who wish to teach this unique style.

Beaches

The star attraction in New Smyrna Beach is its 17-mile stretch of white sandy beaches. Sunbathing, swimming, bicycling, strolling or doing nothing at all is the choice of most visitors. But the beach is also well known to surfers, offering some of the finest wave action on the Eastern seaboard, treasure hunters in search of rare coins and jewelry and anglers who say surf fishing is the only way to go. Unless there are unusual high tides, driving is permitted on the beach from sunrise to sunset.

Boating

Boating is the local pastime in New Smyrna Beach and for good reason: From secluded estuaries to the vast Atlantic Ocean, boating adventures of all types await in New Smyrna Beach. Boating also gives guests an added dimension to fishing, birding or simply sunning. And it's the best way to see dolphin and manatee up-close. Exploring our waterways couldn't be easier. All types of watercraft are ready for rent at local marinas or you can bring your own boat, kayak or canoe.

Golf

Few places can boast the golf-friendly weather and variety of courses that New Smyrna Beach visitors enjoy. The warm climate makes playing golf fun year-round, and New Smyrna courses all feature from 9 to 27 challenging holes.

Historical Sites

New Smyrna Beach holds the distinction of being the second oldest city in Florida, though some historians believe it to be older than St. Augustine. As early as 2,000 B.C., Timucuan Native Americans inhabited the area of New Smyrna Beach. Their civilization thrived on the East Coast of Florida until being destroyed by war and disease brought by European settlers. The Timucuan population almost vanished by the time Dr. Andrew Turnbull, a Scottish physician and entrepreneur, settled in New Smyrna in 1768, naming the area in honor of his wife, whose birthplace was Smyrna, Asia Minor (what is now Izmir, Turkey). New Smyrna, the largest British colonization attempt in the New World, was nearly three times larger than the first settlement at Jamestown in 1607. Doctor Turnbull obtained a land grant from the British Crown, brought with him 1,500 European immigrants and declared New Smyrna as Britain's fourteenth Crown Colony.

CITY & COUNTY PARKS

27th Avenue Beachfront Park
3701 S. Atlantic Avenue
New Smyrna Beach,
FL 32169
386.410.2890

All Children's Park
5959 S. Spruce Creek Road
Port Orange, FL 32127
386.506.5852

Beck Ranch Park
751 S. State Road 415,
Osteen, FL 32764

Buena Vista Park
163 N. Causeway
New Smyrna Beach,
FL 32169
386.410.2890

Callalisa Park
598 S. Peninsula Avenue
New Smyrna Beach,
FL 32169
386.410.2890

Canaveral National Seashore
7611 S. Atlantic Avenue
New Smyrna Beach,
FL 32169
386.410.2890
Fee to enter: \$10

Detwiller Park
701 Oakwood Avenue
New Smyrna Beach,
FL 32169
386.410.2890

Doris Leeper Spruce Creek Preserve
90 Divito Drive
New Smyrna Beach,
FL 32168
386.410.2890

Esther Street Beachfront Park
551 Esther Street
New Smyrna Beach,
FL 32169
386.410.2890

Flagler Avenue Boardwalk Park
East end of Flagler
Avenue Beachside
New Smyrna Beach,
FL 32169
386.410.2890

George R. Kennedy Memorial Park
103 N. Riverside Drive
Edgewater, FL 32132
386.424.2400

Grayce Kenemer Barck
1100 N. Atlantic Avenue
New Smyrna Beach,
FL 32169
386.410.2890

Hickory Bluff Preserve
598 Guise Road
Osteen, FL 32764
386.736.5953

Indian River Lagoon Preserve
700 Sandpiper Street
New Smyrna Beach,
FL 32169
386.410.2890

Lake Ashby Park
4150 Boy Scout Camp Road
New Smyrna Beach,
FL 32168
386.410.2890

Longleaf Pine Preserve
4551 Pioneer Trail
New Smyrna Beach,
FL 32724
386.410.2890

Marianne Clancy Park
901 S. Atlantic Avenue
New Smyrna Beach,
FL 32169
386.410.2890

Mary McLeod Bethune Beach Park
6656 S. Atlantic Avenue
New Smyrna Beach,
FL 32169
386.410.2890

Menard-May Park
413 S. Riverside Drive
Edgewater, FL 32132
386.424.2400

Port Orange Causeway Park
93 Dunlawton Avenue
Port Orange, FL 32127
386.506.5852

River Breeze Park
250 H H Burch Road
Oak Hill, FL 32759
386.736.5953

Riverside Park
105 S. Riverside Drive
New Smyrna Beach,
FL 32169
386.410.2890

Riverside Pavilion Park
3431 S. Ridgewood Avenue
Port Orange, FL 32169
386.761.8122

Rocco Park
2490 Sunset Drive
New Smyrna Beach,
FL 32168
386.410.2890

Rotary Park
902 West Park Avenue
Edgewater, FL 32132
386.424.2400

Smyrna Dunes Park
2995 N. Peninsula Drive
New Smyrna Beach,
FL 32169
386.410.2890
Fee to enter: \$10

Veteran's Park
1811 S. Riverside Drive
Edgewater, FL 32141
386.424.2400

Wiregrass Prairie Preserve
1751 Lopez Road
Osteen, FL 32765
386.736.5953

EATS

Surfers, divers, and kayakers will happily tell you why the New Smyrna Beach Area is a feast of natural wonders, but so too will legions of foodies who regularly converge on the area's restaurants. With ready access to the freshest seafood and produce imaginable, area chefs are finding new and inventive ways to turn those blessings into dishes you'll dream about until your next visit. For a full list of restaurants, please visit our website at VISITNSBFL.COM or download our free app New Smyrna Beach from the App Store or the Google Play Store.

FITNESS CENTERS

4Ever Fitness
4639 S. Clyde Morris Blvd.
Unit 104
Port Orange, FL 32129
386.788.5678
4everfitness.net

Anytime Fitness
3761 S. Nova Road
Port Orange, FL 32129
386.243.5640
anytimefitness.com

Edgewater Fitness Club
3042 S Ridgewood Avenue
Edgewater, FL 32141
386.402.4917
edgewaterfitnessclub.com

Heartland Rehabilitation Service
140 Wallace Road
New Smyrna Beach,
FL 32168
386.427.4866
hcr-manorcare.com

LA Fitness
1810 Dunlawton Avenue
Port Orange, FL 32127
386.682.2509
lafitness.com

Nautilus by the Sea
41765 S. Atlantic Avenue
New Smyrna Beach,
FL 32169
386.426.0079
nautilus-by-the-sea.com

New Smyrna Athletic Club
401 Canal Street
New Smyrna Beach,
FL 32168
386.423.4267
nsathletic.com

Port Orange Family YMCA
4701 City Center Parkway
Port Orange, FL 32129
386.760.9622
YMCA.net

Snap Fitness
424 Luna Bella Lane
Suite 131
New Smyrna Beach,
FL 32168
(Venetian Bay Town Center)
386.423.8995
snapfitness.com

Vision Fitness 24
1998 State Road 44
Suite 6
New Smyrna Beach,
FL 32168
386.410.4730
visionfitnessnsb.com

YMCA
148 W. Turgot Avenue
Edgewater, FL 32132
386.409.9622
YMCA.net

HEALTH/ NUTRITION

Café Heavenly
115 Flagler Avenue
New Smyrna Beach,
FL 32169
386.427.7475
cafeheavenly.com

Debbie's Health Food
3850 S. Nova Road
Port Orange, FL 32127
386.763.7046
debbieshealthfoods.com

Family Nutrition
515 Canal Street
New Smyrna Beach,
FL 32168
386.402.7825
thefamilynutritionstore.com

Fresh Healthy Café
5521 S. Williamson Blvd.
Port Orange, FL 32128
386.675.6580
freshrestaurants.com

GNC
1968 State Road 44
New Smyrna Beach,
FL 32168
386.426.1598
gnc.com/new-smyrna-beach-fl

GNC
3859 S. Nova Road
Port Orange, FL 32127
386.788.1129
gnc.com/port-orange-fl

GNC
5521 S. Williamson Blvd.
Suite 402
Port Orange, FL 32128
386.767.7672
gnc.com/port-orange-fl

GoJuice

221 Flagler Avenue
New Smyrna Beach,
FL 32169
386.690.6273

Heath's Natural Foods

600 E. Third Avenue
New Smyrna Beach,
FL 32169
386.423.5126
heathsnaturalfoods.com

**Healing Zone
Superfoods Café**

515 Canal Street
New Smyrna Beach,
FL 32168
386.402.7825
thefamilynutritionstore.com

**Love Whole Foods
Cafe & Market**

1633 Taylor Road
Port Orange, FL 32128
386.767.6543
lovewholefoods.com

Mason Bar

488 N. Causeway
New Smyrna Beach,
FL 32169
386.410.2904
freshmasonbar.com

New Beginnings Nutrition

1509 S. Ridgewood Avenue
Edgewater, FL 32132
386.871.6385

Take Off Nutrition

3771 S. Nova Road
Port Orange, FL 32129
386.299.3647
takeoffexpress.com

Tropical Smoothie

1781 Dunlawton Avenue
Suite 1
Port Orange, FL 32127
386.788.1887
tropicalssmoothie.com

MEDICAL, REHAB & THERAPY

Accurate Healthcare Group

401 Canal Street
New Smyrna Beach,
FL 32168
386.427.2722

**ActiveFIT Rehab
Physical Therapy**

4649 Clyde Morris Blvd.
Unit 607
Port Orange, FL 32129
386.214.2663
activefitpt.com

**Advent Health Centra Care
Port Orange**

1208 Dunlawton Avenue
Port Orange, FL 32127
386.304.7320
centracare.org/florida

**Advent Health
New Smyrna Beach**

401 Palmetto Avenue
New Smyrna Beach,
FL 32168
386.424.5000
floridahospital.com/
new-smyrna

**Arc Physical Therapy &
Acupuncture**

4649 S. Clyde Morris Blvd.
Unit 603
Port Orange, FL 32129
386.898.0908
yourpainspecialist.com

**Atlantic Chiropractic and
Wellness Center**

840 Dunlawton Avenue
Suite B
Port Orange, FL 32127
386.492.4881
atlanticchirofl.com

Atlantic Orthopedics

1400 Dunlawton Avenue
Suite A
Port Orange, FL 32127
386.760.5008

Atlantic Urgent Care

735 Dunlawton Avenue
Port Orange, FL 32127
386.872.5190
atlanticuc.com

Atlantic Wellness Center

225 N. Causeway
New Smyrna Beach,
FL 32169
386.424.9977
wellnessnsb.com

Be Well Chiropractic

515 Canal Street
New Smyrna Beach,
FL 32168
386.402.8997
bewellnsb.com

Bennett Chiropractic Clinic, Inc.

3945 S. Nova Road
Port Orange, FL 32127
386.767.1100
carlbennettchiropractic.com

Blue Water Therapy

916 N. Dixie Freeway
New Smyrna Beach,
FL 32168
386.426.7885
bluewatertherapynsb.com

CORA Rehabilitation Clinics

1525 Herbert Street
Suite 103
Port Orange, FL 32129
386.756.0424
corahealth.com

**Farmer Family Chiropractic
and Wellness**

532 Canal Street
New Smyrna Beach,
FL 32168
386.314.3688
farmerfamilychiro.com

Gringras Wellness Center

720 E. Third Avenue
New Smyrna Beach,
FL 32169
386.423.2225

**Halifax Medical Center
Port Orange**

1401 Dunlawton Avenue
Port Orange, FL 32129
386.425.4762
halifax.org

The Hawthorne Clinic

1690 Dunlawton Avenue
Suite 110
Port Orange, FL 32127
386.788.4949
hawthorneortho.com

Knee & Shoulder Institute

790 Dunlawton Avenue
Suite D
Port Orange, FL 32127
386.788.4949
hawthorneortho.com

**New Smyrna Beach
Chiropractic Clinic**

1205 N. Dixie Freeway
#L
New Smyrna Beach,
FL 32168
386.423.5259
newsmyrnachiropractic.com

**New Smyrna Beach
Urgent Care**

1860 Renzulli Road
New Smyrna Beach,
FL 32168
386.663.3061
newsmyrnabeachurgentcare.com

New Smyrna Orthopedics

812 W Indian River Blvd.
Edgewater, FL 32132
386.426.1411
kollmermd.com

**New Smyrna Spine &
Injury Center**

259 N. Causeway
New Smyrna Beach,
FL 32169
386.423.2415
newsmyrnaspine.com

**New Smyrna
Wellness Center**

502 Palmetto Street
New Smyrna Beach,
FL 32168
386.957.1854
newsmyrnawellness.com

**The Orthopedic Clinic
Port Orange Office**

1165 Dunlawton Avenue
Suite 102
Port Orange, FL 32127
386.255.4596
orthodb.com

Palmer Chiropractic Clinics

4705 S. Clyde Morris Blvd.
Port Orange, FL 32129
386.763.2718
palmer.edu/clinics/
port-orange

**Pathway to Healing
Acupuncture &
Massage Therapy**

429 Canal Street
New Smyrna Beach,
FL 32168
386.426.1290
pathwaytohealingacupuncture.com

**Port Orange Family
Chiropractic Center**

4606 S. Clyde Morris Blvd.
Port Orange, FL 32129
386.756.9303
portorangefamilychiropracticcenter.com

**PrimeCare at
New Smyrna Beach**

1327 Saxon Rd
Port Orange, FL 32169
386.767.2402
primecaremd.org

Pro-Motion Physical Therapy

4606 S. Clyde Morris Blvd.
Suite 1D
Port Orange, FL 32129
386.492.2986
mypro.motionphysicaltherapy.com

**Professional
Physical Therapy**

1316 S. Ridgewood Avenue (U.S. 1)
Suite #1
Edgewater, FL 32132
386.423.0100
proptfl.com

**Quick Care Medical
Treatment Center**

4530 S. Ridgewood Avenue
Port Orange, FL 32127
386.788.1881

**Raintree Chiropractic and
Wellness Center**

394 B N. Causeway
New Smyrna Beach,
FL 32169
386.426.2232

SHOPPING

Shop along historic Flagler Avenue and Canal Street and find a unique gift for that hard-to-please friend. Get all the necessities or the latest in Florida fashions at local department and drugstores. When you finish shopping, grab a bite to eat at one of our many local restaurants or one of your favorite national chains. Shopping and dining: always a one-of-a-kind experience in the greater New Smyrna Beach area!

Canal Street Shopping

Our pedestrian-friendly, tree-lined streets offer a vibrant blend of parks and historic buildings, specialty shops and service businesses, fine dining, art galleries, cultural attractions and the New Smyrna Beach Museum of History.

Flagler Avenue

New Smyrna Beachside shops, galleries, dining and inns. Stroll this charming historic street. Shop our unique galleries and boutiques. Enjoy one of our restaurants. Experience spectacular sunsets and retire to one of our inns or hotels. Awake to the sound of the ocean at your doorstep and once again immerse yourself in the tranquility and beauty of Flagler Avenue. Stroll the five blocks from the ocean to the river. Flagler Avenue is a treasure of yesterday's old Florida ambiance.

Pavilion at Port Orange

This is an open-air shopping destination located in Port Orange, Florida. The Pavilion offers a shopping, entertainment and dining experience with an exciting boardwalk feel. The Pavilion, features a 14-screen Hollywood Theaters, large format stores, a covered play area, walking trails surrounding the water, decorative fountains and outdoor community performance venue.

SPORTS & RECREATION FACILITIES

Alonzo "Babe" James Center

201 N. Myrtle Avenue
New Smyrna Beach,
FL 32168
386.424.2299

Aqua Park Swim Club

600 Eaton Road
Edgewater, FL 32132
386.428.0222

Beck Ranch Park

751 S. State Road 415,
Osteen, FL 32764

Coraci Sports Complex

5200 Coraci Boulevard
Port Orange, FL 32128
386.506.5852

Hawks Park Recreation Complex

1108 S. Ridgewood Avenue
Edgewater, FL 32132
386.424.2400

Mary DeWees Park

178 N. Gaines Street
Oak Hill, FL 32759
386.255.0415

New Smyrna Beach City Gym

1000 Live Oak Street
New Smyrna Beach,
FL 32168
386.424.2288

New Smyrna Beach Sports Complex

1800 Turnbull Bay Road
New Smyrna Beach,
FL 32168
386.424.2271

Pettis Park

800 Mary Avenue
New Smyrna Beach,
FL 32168
386.424.2175

Port Orange City Center & Sports Complex

4625 City Center Drive
Port Orange, FL 32129
386.506.5852

Southeast Volusia Family YMCA

148 W. Turgot Avenue
Edgewater, FL 32132
386.428.9737

Southwinds Soccer Complex

1200 Richel Drive
Port Orange, FL 32129
386.506.5852

Spruce Creek Recreational Facility

5959 S. Spruce Creek Road
Port Orange, FL 32127
386.506.5852

Whistle Stop Park

651 Roberts Road
Edgewater, FL 32141
386.424.2400

SPECTATOR SPORTS

Daytona International Speedway

1 Daytona Boulevard
Daytona Beach, FL 32114
800.748.7467

If you think the Great American Race is just a race, you need to look again. This is pageantry and history, celebrities and spectacle taken to a whole different level. There's only one DAYTONA 500 – celebrate it at the place that's delivered unforgettable moments for six decades. Other events as well the Rolex 24, Speedworks, Turkey Rod, Super Cross, and Country 500 Music Festival.

New Smyrna Lanes

185 N. Causeway
New Smyrna Beach,
FL 32169
386.428.4332

New Smyrna Lanes is a beautiful 16 lane center that has been family owned and operated since 1960. With state of the art technology and a professional, attentive staff, New Smyrna Lanes delivers the best bowling experience around.

Come see our newly remodeled center.

New Smyrna Speedway

3939 State Road 44
New Smyrna Beach,
FL 32168
386.427.4139

New Smyrna Speedway is a high-banked, half-mile paved oval track located just 5

miles west of New Smyrna Beach, Florida, and just 10 miles south of Daytona Beach, Florida. Known by many as the "World Center of Racing," New Smyrna Speedway has been home to some of the finest stock car racing in the entire Country now for more than 45 years.

Along with providing the best weekly racing and special events in the area, the Speedway has been highly utilized in recent years as a prime testing facility for some of the teams from the NASCAR Nationwide, Camping World Truck and Sprint Cup Series.

SPORTS STORES & EQUIPMENT

Bicycling Rentals



Beach Bicycle & Kayak

553 Third Avenue
New Smyrna Beach,
FL 32169
386.423.8123

Beachside Candy Co.

221 Flagler Avenue
New Smyrna Beach,
FL 32169
386.424.1883
beachsidecandy.com

Fox Firestone Bicycles

1609 Canal Street
New Smyrna Beach,
FL 32168
386.410.3744
foxbikes.com

Nichols Surf Shop

307 Lytle Avenue
New Smyrna Beach,
FL 32168
386.427.5050
nicholssurfshop.com

Paradise Power Sports

920 E. Third Avenue
New Smyrna Beach,
FL 32169
386.402.8991
paradisepowersportsfl.com

Salty Rentals

301 Buenos Aires Street
New Smyrna Beach,
FL 32169
386.847.8909
saltymermaidnsb.com

Wild Side

521 Flagler Avenue
New Smyrna Beach,
FL 32169
386.427.1664
wildsidensb.com

Golf



The Club of Venetian Bay - Pro Shop

63 North Airport Road
New Smyrna Beach,
FL 32168
386.424.5775

New Smyrna Golf Club

1000 Wayne Avenue
New Smyrna Beach,
FL 32168
386.410.2693

Smyrna Golf Company

1 Fairgreen Avenue
New Smyrna Beach,
FL 32168
386.846.0390

Running



The Running Elements

5521 S. Williamson
Boulevard
Port Orange, FL 32128
386.265.4110
therunningelements.com

Surf/Dive/SUP/Kayak



Discover Diving Dive Center

92 Dunlawton Avenue
Port Orange, FL 32127
386.760.3483
divefl.com

East Coast Paddle

6696 Engram Road
New Smyrna Beach,
FL 32169
386.402.8585
eastcoastpaddle.com

JB's Fish Camp

859 Pompano Avenue
New Smyrna Beach,
FL 32169
386.427.5023
jbsfishcamp.com

Marine Discovery Center

520 Barracuda Boulevard
New Smyrna Beach,
FL 32169
386.428.4828
marinediscoverycenter.org

New Smyrna Stand Up

New Smyrna Beach,
FL 32169
386.314.5211
newsmyrnastandup.com

Nichols Surf Shop

307 Lytle Avenue
New Smyrna Beach,
FL 32168
386.427.5050
nicholssurfshop.com

Red Dog Surf Shop

801 Third Avenue
New Smyrna Beach,
FL 32169
386.423.8532
reddogsurfshop.com

Rip Curl

510 Flagler Avenue
New Smyrna Beach,
FL 32169
386.423.2317
ripcurl.com

Sea Dogs Dive Center

111 Flagler Avenue
New Smyrna Beach,
FL 32169
386.424.1644
seadogdiver.com

Spruce Creek Scuba

1646 Taylor Road
Port Orange, FL 32168
386.767.1727
sprucecreekscuba.com

Surfin' NSB

386.243.9283
surfinnsb.com

Paddleboard New Smyrna

175 N. Causeway
New Smyrna Beach,
FL 32169
386.530.3868
paddleboardnsb.com

Quiet Flight Surf Shop

508 Flagler Avenue
New Smyrna Beach,
FL 32169
386.427.1917
quietflight.com

WEATHER

Beach Safety Volusia County

volusia.org/services/public-
protection/beach-safety

My News 13

mynews13.com/news/
volusia.html

VISITNSBFL.COM

Weather Underground

wunderground.com

The Weather Channel

weather.com

WESH 2

wesh.com

THE NEW SMYRNA BEACH AREA IS A CENTRAL LOCATION:

DAYTONA BEACH

Daytona International Speedway
1801 W International Speedway
Boulevard
Daytona Beach, FL 32114
daytonainternationalspeedway.com

KISSIMMEE

Disney's Magic Kingdom
1180 Seven Seas Drive
Lake Buena Vista, FL 32830
[disneyworld.disney.go.com/
destinations/magic-kingdom](http://disneyworld.disney.go.com/destinations/magic-kingdom)

ORLANDO

Islands of Adventure
6000 Universal Boulevard
Orlando, FL 32819
[universalorlando.com/web/en/us/
theme-parks/islands-of-adventure/
index.html](http://universalorlando.com/web/en/us/theme-parks/islands-of-adventure/index.html)

SeaWorld
7007 Sea World Drive
Orlando, FL 32821
seaworld.com/orlando

Universal Studios
6000 Universal Boulevard
Orlando, FL 32819
[universalorlando.com/web/en/us/
index.html](http://universalorlando.com/web/en/us/index.html)

Volcano Bay
6000 Universal Boulevard
Orlando, FL 32819
[universalorlando.com/web/en/us/
theme-parks/volcano-bay/index.html](http://universalorlando.com/web/en/us/theme-parks/volcano-bay/index.html)

TITUSVILLE

Kennedy Space Center
SR 405
Kennedy Space Center,
FL 32899
kennedyspacecenter.com

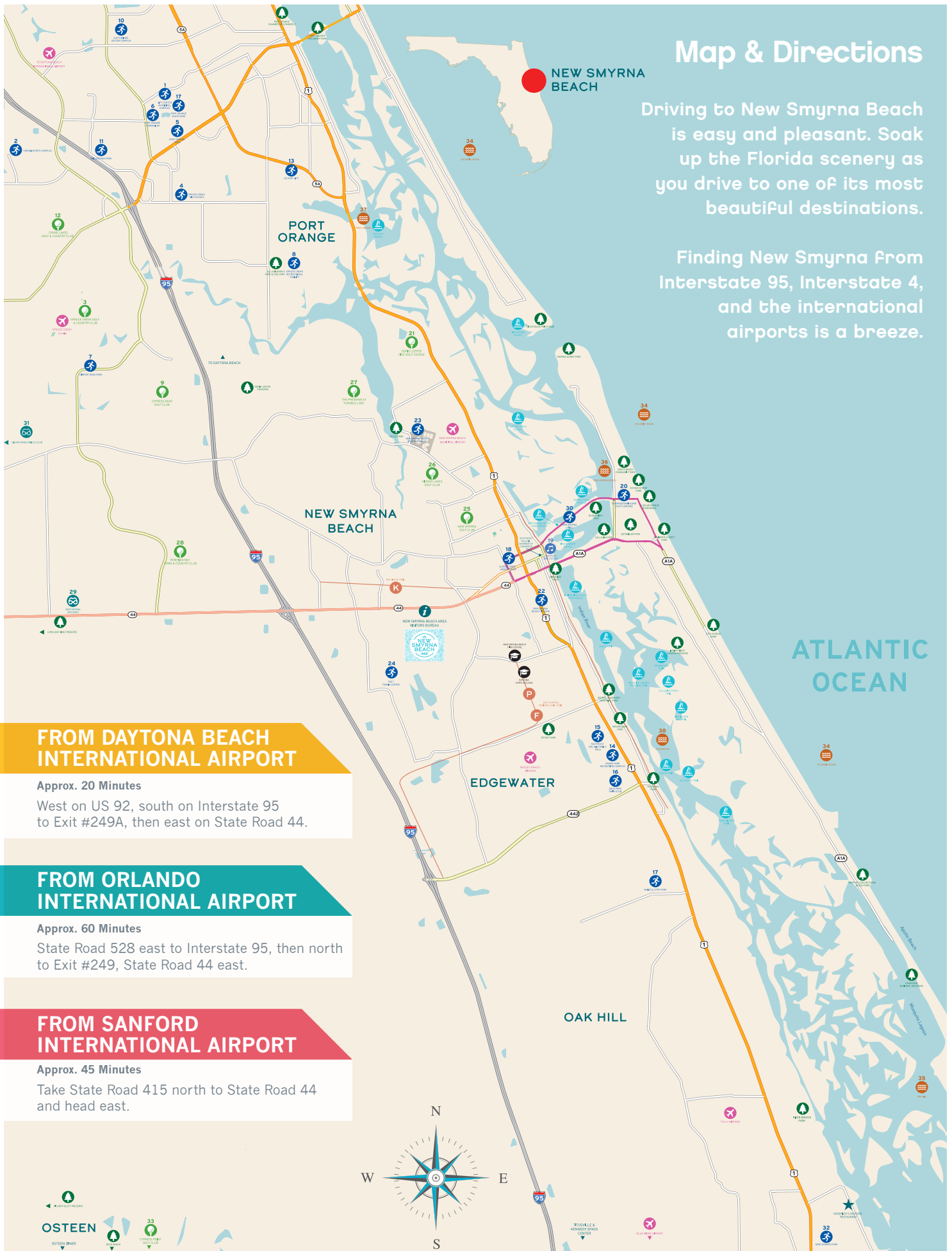
WINTER HAVEN

LEGOLAND Florida
1 Legoland Way
Winter Haven, FL 33884
legoland.com/florida

Map & Directions

Driving to New Smyrna Beach is easy and pleasant. Soak up the Florida scenery as you drive to one of its most beautiful destinations.

Finding New Smyrna from Interstate 95, Interstate 4, and the international airports is a breeze.



FROM DAYTONA BEACH INTERNATIONAL AIRPORT

Approx. 20 Minutes

West on US 92, south on Interstate 95 to Exit #249A, then east on State Road 44.

FROM ORLANDO INTERNATIONAL AIRPORT

Approx. 60 Minutes

State Road 528 east to Interstate 95, then north to Exit #249, State Road 44 east.

FROM SANFORD INTERNATIONAL AIRPORT

Approx. 45 Minutes

Take State Road 415 north to State Road 44 and head east.



2238 State Road 44
New Smyrna Beach, FL 32168
800.541.9621 • 386.428.1600
VISIT **NSB**FL.COM/SPORTS